

State of Wyoming Corner Record

(In compliance with the CORNER PERPETUATION AND FILING ACT, Wyoming Statutes, 1977, Section 38-11-101, et, seq., and the Rules and Regulations of the Board of Registration for Professional Engineers and Professional Land Surveyors)

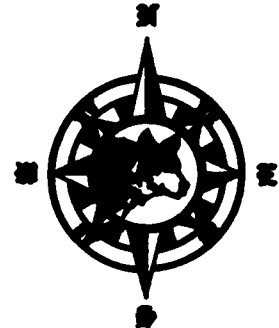
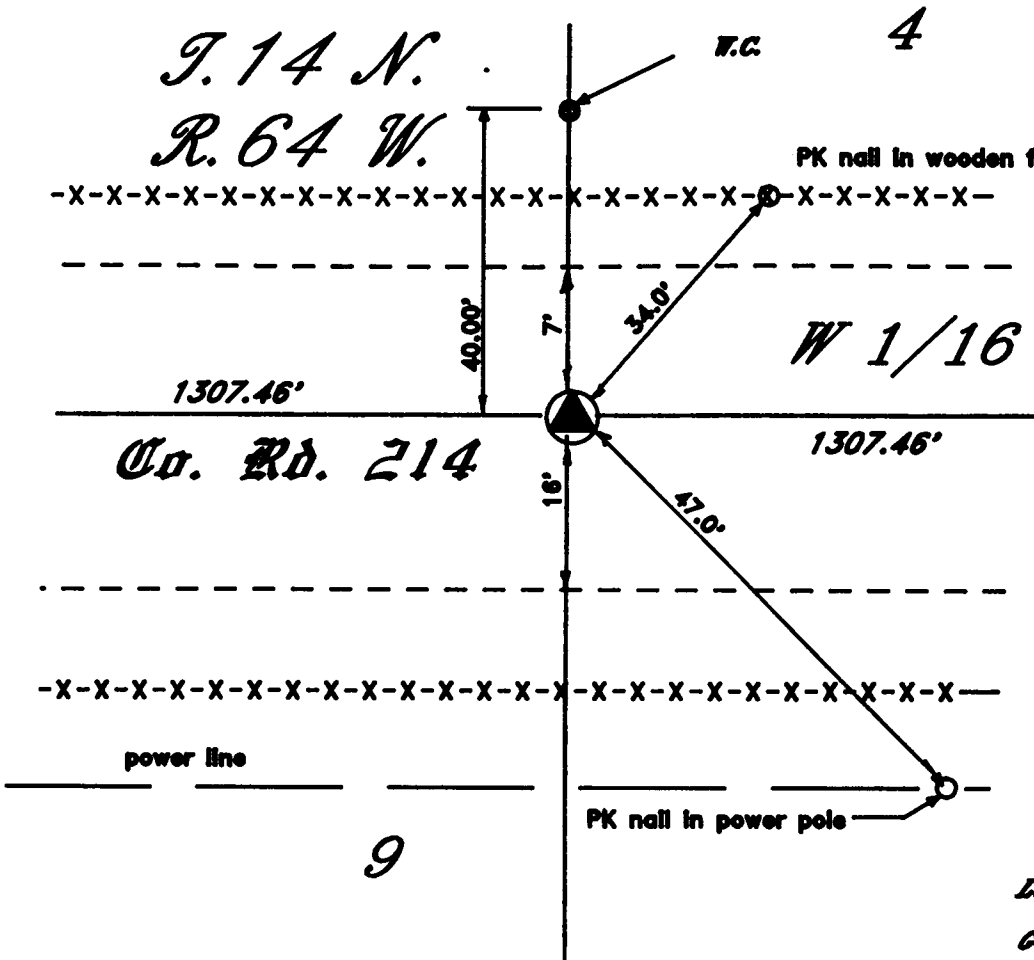
The Reverse side of this form may be used if more space is needed.

The record of the original survey and the citation of the source of historical information (if the corner is lost or obliterated) The description of the corner monumentation evidence as found and/or monument and accessories established to perpetuate the location of this corner. A sketch of the relative location of the monument, accessories, and reference points with course and distance to the adjacent corner(s) (if determined in this survey). The method and rationale for reestablishment of the lost or obliterated corner.

G.L.O.: NOT SET DURING ORIGINAL SURVEY.

Set 5/8"X36" rebar with 2" Aluminum Cap 10" below road surface
set rebar with Aluminum Cap 40 feet North for W.C.

211088
 LARAMIE COUNTY CLERK
 CHEYENNE, WY.
 '97 SEP 30 PM 1 53

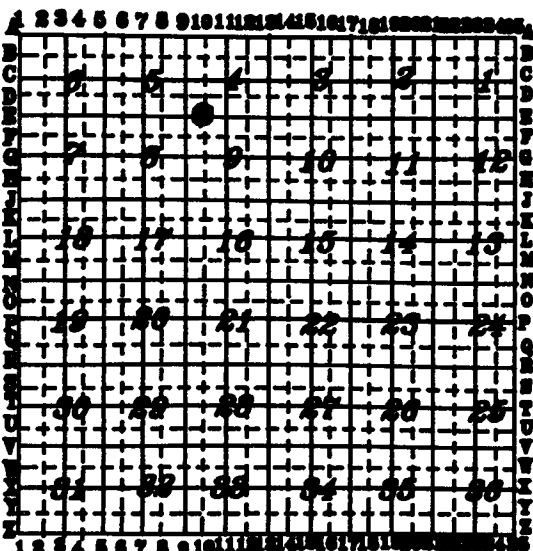


Larry F. Perry L.S.
Gary N. Grigsby RIT

Date of Field Work: 24 Sep 97

Office Reference: _____

Cross Index Diagram



Geometrical Surveying & Mapping Co.

1187 Terry Ranch Road Cheyenne, Wyoming 82007

Phone: (307) 634-6300

This corner record was prepared by me or under my direct supervision.

Seal and Signature



E ~ 10

Corner Name: W 1/16 Section: 4 T. 14 N. R. G4 W. 48 P.M. Cross Index No. _____

BOOK 1461

1569